



Electric Construction
Tourism Industry and
Trade Limited Co.



Pump Control Systems



We manage water.
You can use it safely.

JOKER PANEL



1. General Product Informations

Joker control panel is a panel that has the opportunity to monitor and control the operating status and error details of the pumps in single pump booster systems. The Panel includes a specially designed mainboard and 4x20 LCD display. It includes General Error / No Water / Phase Error LEDs and Up / Down buttons that allow you to navigate and adjust the menu. Moreover, There are SET/RESET/ ESC buttons as well as switch, pump running and automatic operation warning leds. System parameters can be easily adjusted from the setting menu with the Set / Esc / Up / Down buttons.

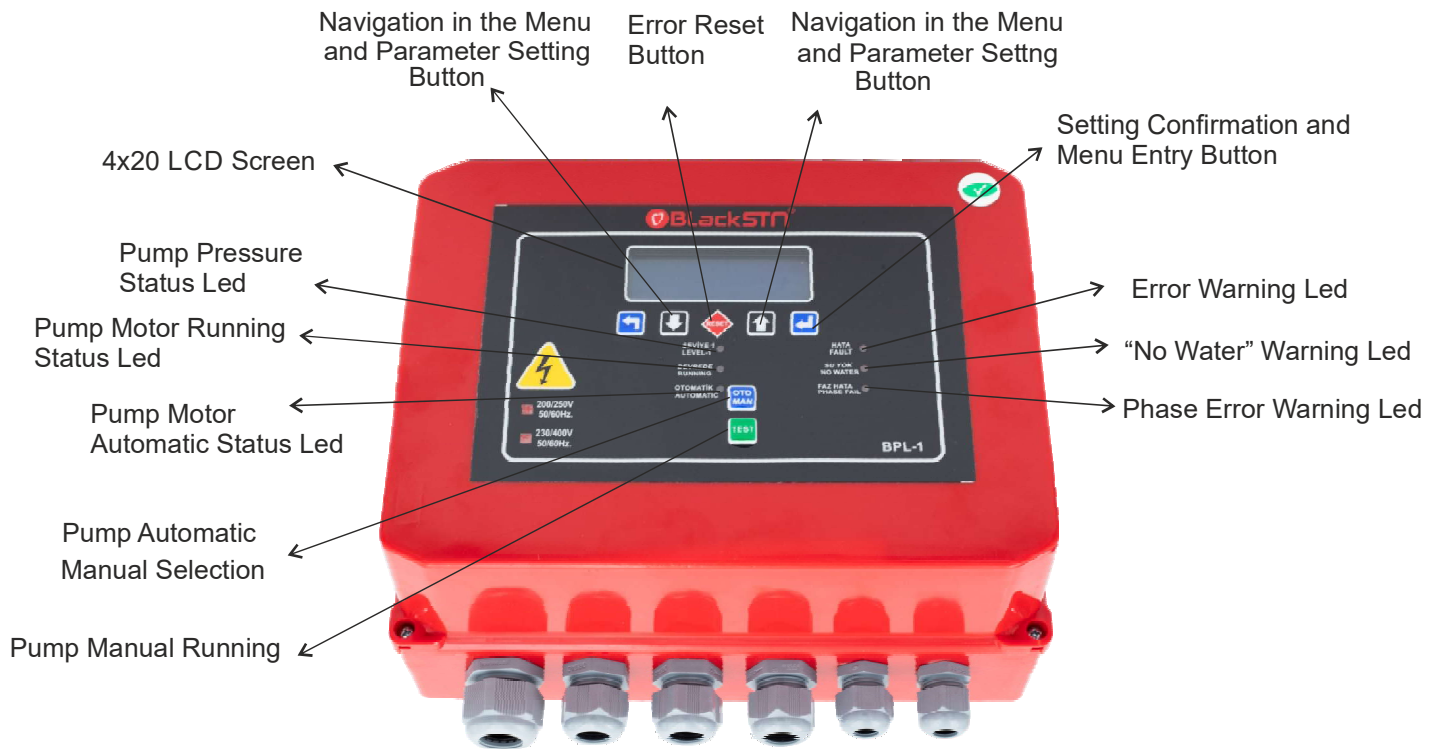


Figure 1. BPL-1T Control Panel Outer View

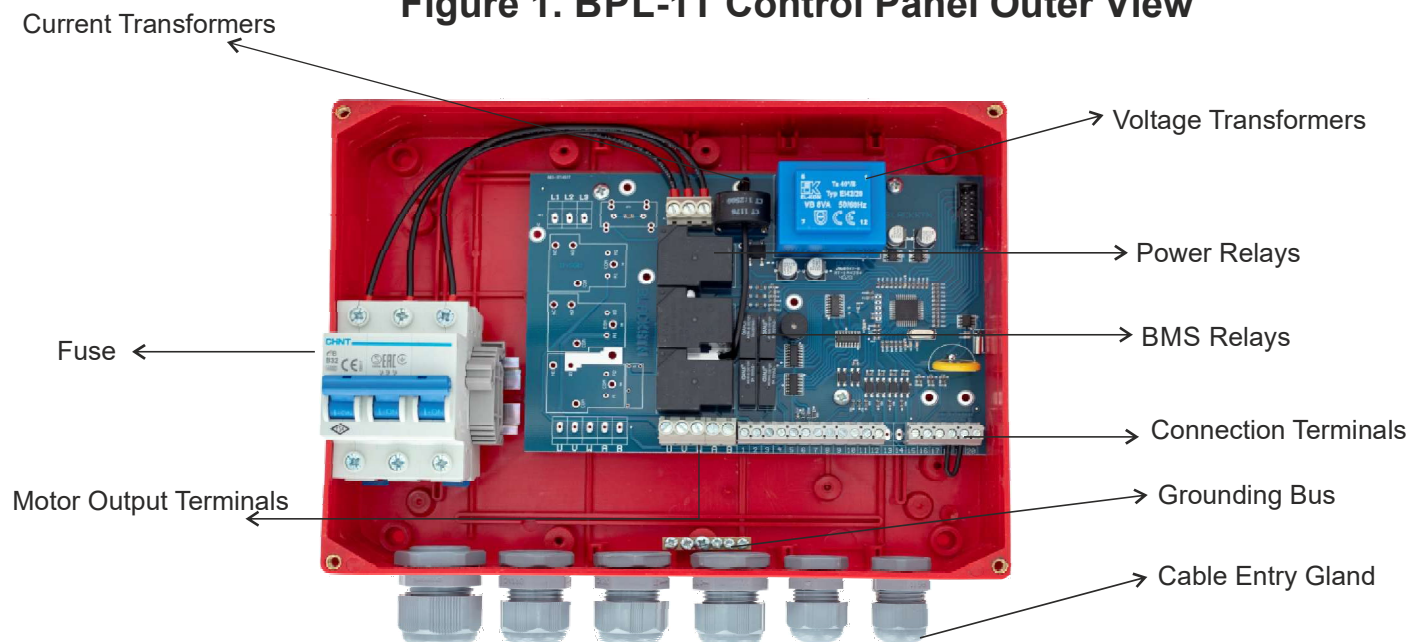


Figure 2. BPL-1T Control Panel Inner View

Specifications

- 1 16 bit microprocessor based design
- 2 48 Mhz operating frequency.
- 3 4x20 Character Blue Screen LCD
- 4 Displaying the date and time information on the screen
- 5 Ability to automatically self-test 2 days a week (real time clock)
- 6 Automatic test solenoid valve output
- 7 Measuring 3 phase voltage values and displaying them on the screen.
- 8 Ability to set voltage protection upper and lower values.
- 9 Ability to monitor pump error conditions from the screen.
- 10 Ability to display pump currents from the screen
- 11 Ability to set pump upper and lower current values
- 12 Automatic calculation of pump current values with recognition mode
- 13 Ability to limit the number of pumps engaged (switchgear) within 1 hour.
- 14 Automatic resetting of current errors.
- 15 Ability to set automatic reset waiting time and number.
- 16 Automatic and manual operation selection.
- 17 Operation as you press the test button in manual operation.
- 18 Protection against dry running by floater or electrode.
- 19 Undercurrent protection against dry running
- 20 Ability to see all error conditions on the screen.
- 21 Notifying error conditions with audible buzzer and relay contact.
- 22 Ability to use with pressure transmitter.
- 23 Ability to see the pressure value on screen when using with pressure transmitter.
- 24 Adjustment of set pressure value when using pressure transmitter.
- 25 Ability to display the pump running times on the screen.
- 26 Real-time co-aging
- 27 PTC (temperature) protection of all pumps.
- 28 Ability to use as a waste water panel (menu option)
- 29 Water leakage connection in the selection of waste water panel.
- 30 Password protection against unauthorized access
- 31 Turkish Usage Menu
- 32 Failure record-The device stores the last 20 faults with date and time.

General Informations

- Electrical panel is designed based on microcontroller.
- All control operations on the electrical panel are performed electronically and stored
- The electronic card in the electrical panel is produced with high technology SMD material.
- SMD LED lamp LCD (liquid Crystal Display) screen with minimum energy consumption is used as an indicator.

Technical Specifications

Operating Voltage	3x380V AC
Running Frequency	50 - 60 Hz.
Running Current	0,02 - 5,5 A.
Screen	4x20 Character Blue Screen LCD
Measurement Accuracy	± %1
Temperature	-20.....+50°C
Dimensions (mm)	200X280X140
Weight	2350 gr.

Figure 3. Technical Specifications
280mm.

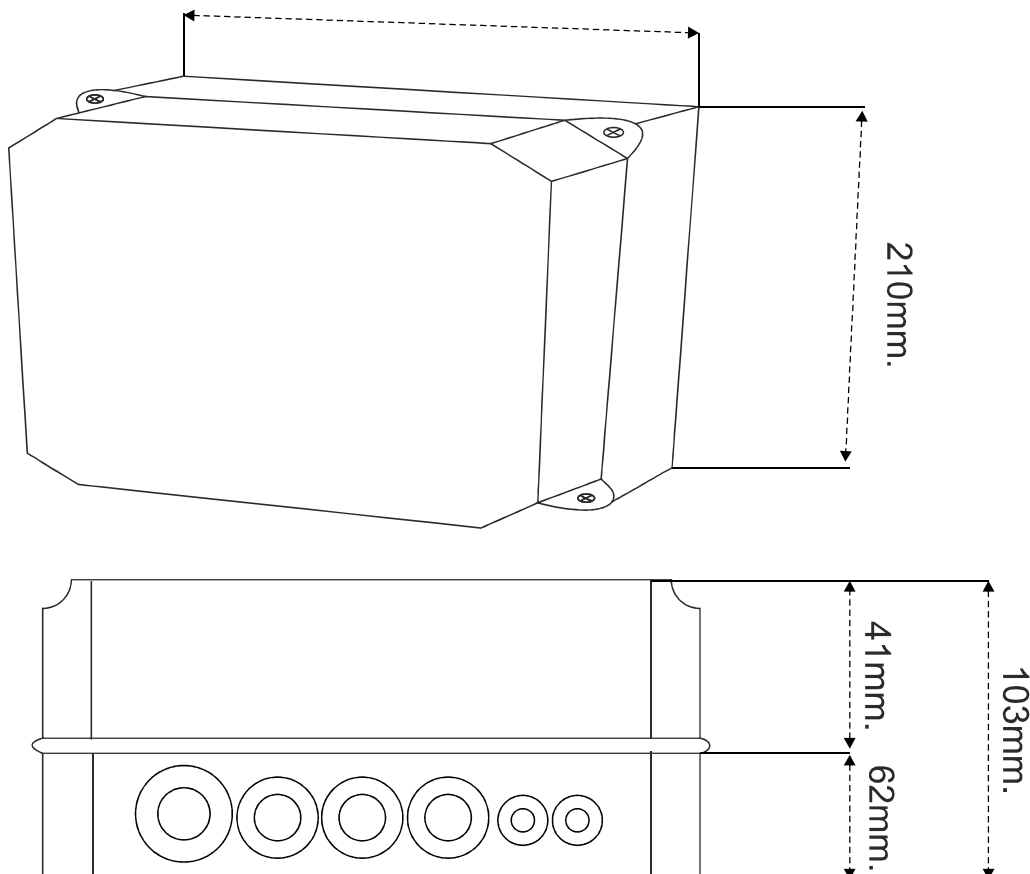
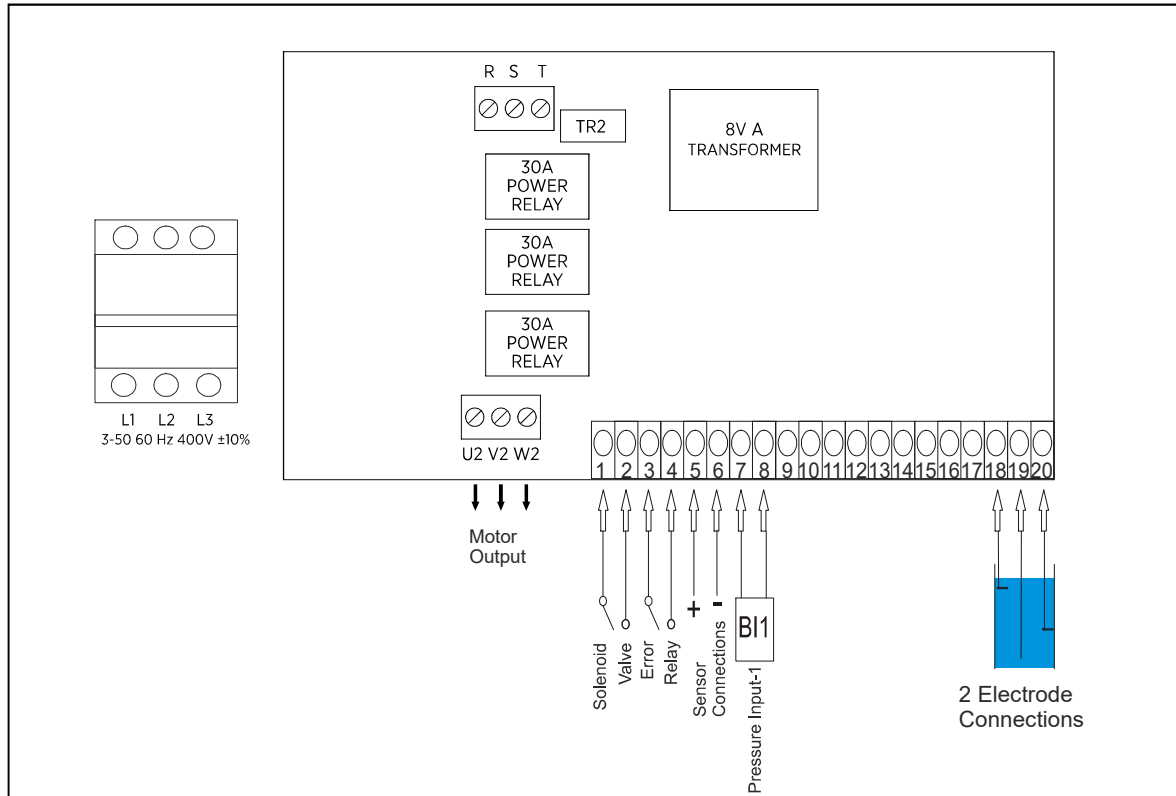
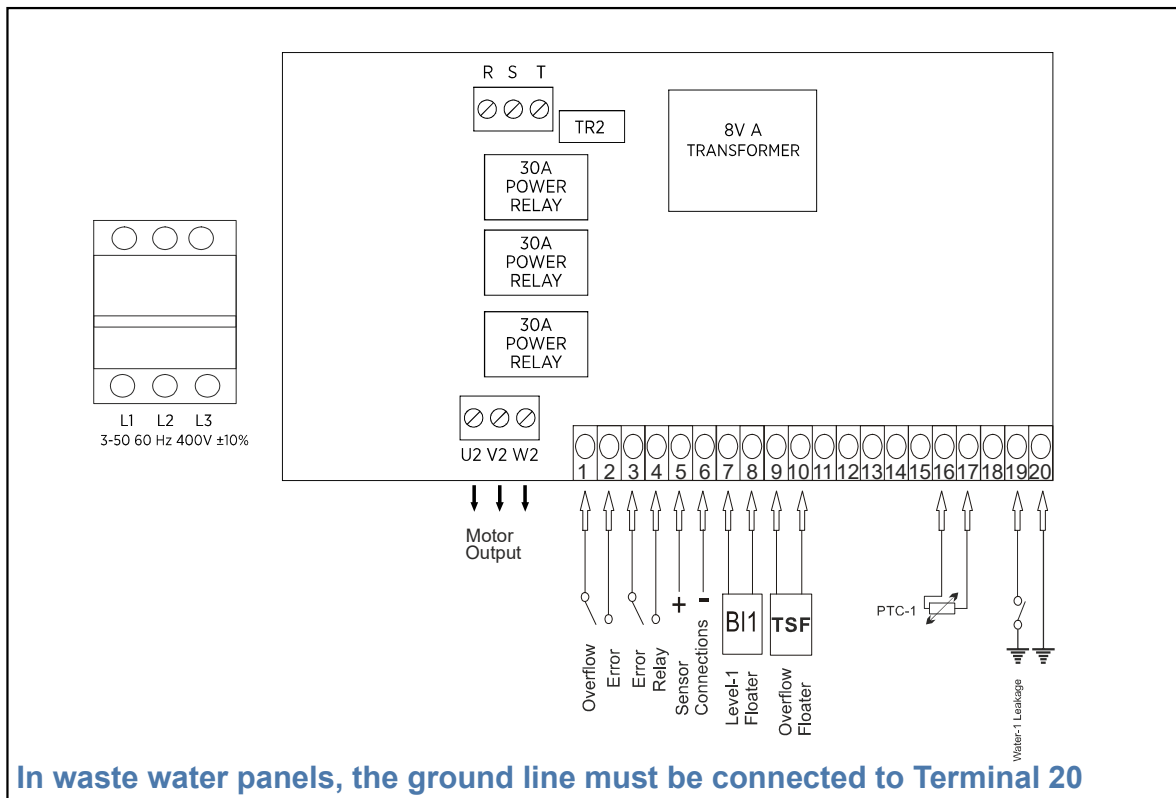


Figure 4. Panel Dimensions

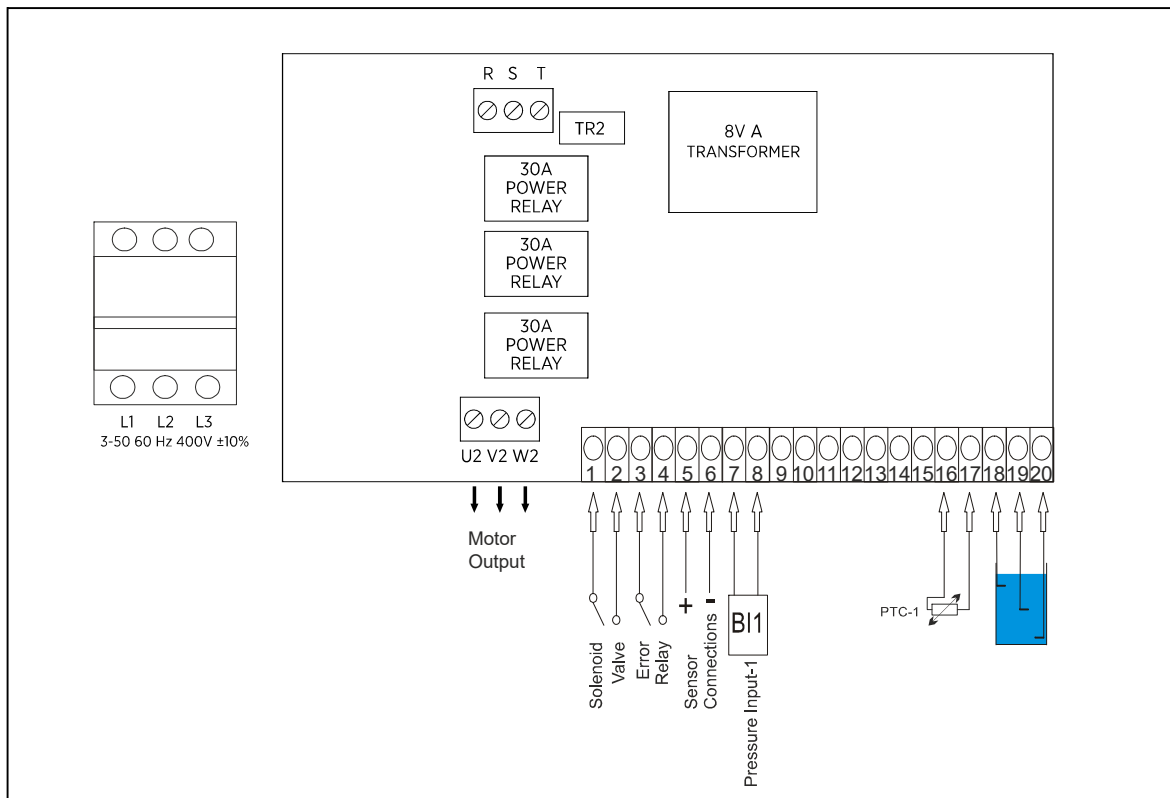
Single Pump Hydrophore



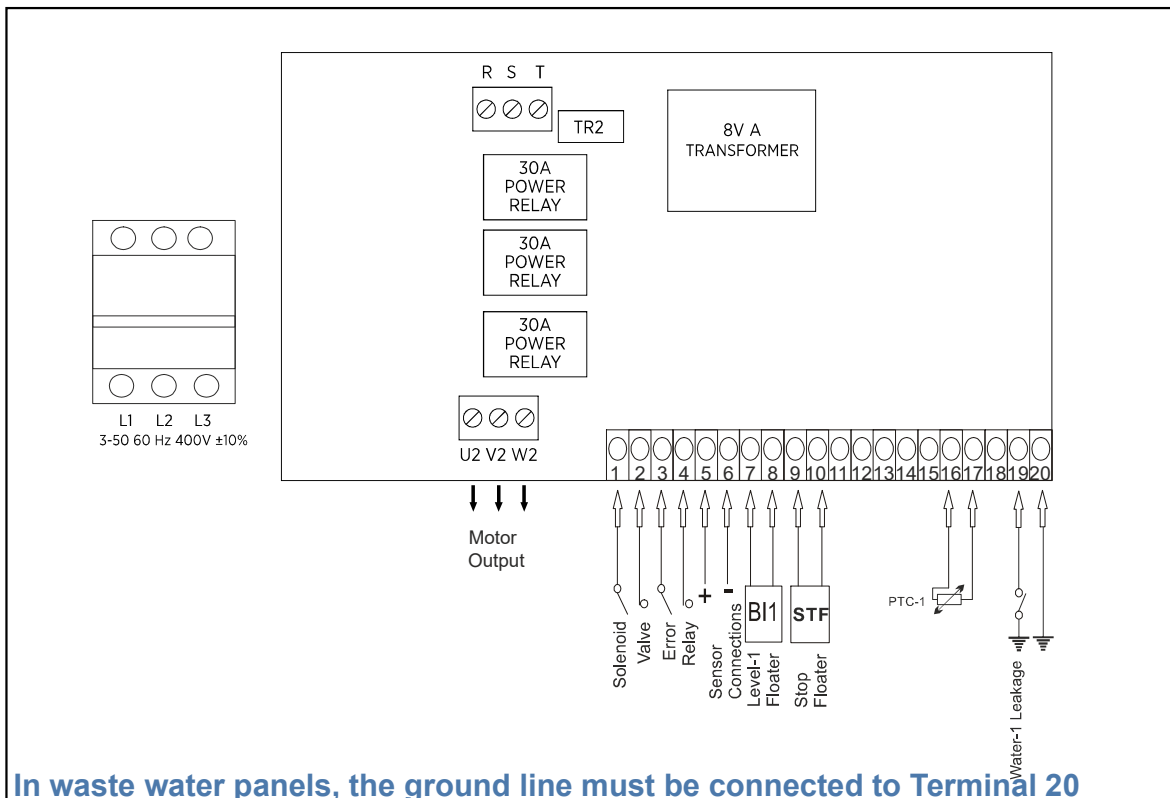
Single Pump Waste Water :



Single Pump Hydrophore + Ptc :



Single Pump Waste Water Stop Floater :





CERTIFICATE

Attestation of Conformity

Name and Address of Certificate Holder:

KRK ELEKTRİK İNŞ. TURZ. SAN. VE TİC. LTD. ŞTİ.
Esenler Mah. Gözde Sok. No:1 Pendik / İSTANBUL

Certificate Number:

SE-226-03

Name and Address of Manufacturer:

KRK ELEKTRİK İNŞ. TURZ. SAN. VE TİC. LTD. ŞTİ.
Esenler Mah. Gözde Sok. No:1 Pendik / İSTANBUL

Date of Issue:

27-01-2020

Brand:

BLACKSTN

Expiration Date:

27-01-2021

Product Name:

Control Panel

Model No:

BPL-2; BPL-T; BPL-M; BPL-1T; BPL-1M; BPL-2T; BPL-2M;
BPL-3T; BPL-3M; BPL-U1T; BPL-U1M; BPL-U2T; BPL-U2M;
BPL-U3T; BPL-U3T

Test Report Number:

1806.10.03/10
18-1195-R00-N00-00

Test Required:

EN 61010:2010 & EN 61000-6-1:2007
EN 61000-6-3:2007/A1:2011/AC:2012

Page:

1 of 1

The product meets the technical requirement of the above standards and hence fulfills the technical requirements of the following directives.

2014/35/EU Low Voltage Directive 2014/30/EU Electromagnetic Compatibility Directive

This certificate is only valid for the equipment and configuration described, in conjunction with the test data detailed above and with compliance with all applicable legal requirement for the product

The CE Mark as shown below can be used, under the responsibility of the manufacturer or the importer, after completion of an EC Declaration of Conformity and compliance with all relevant EC Directives.



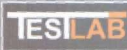

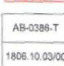



SIGNATURE







[illegible]

 <p>www.testsla.com.tr</p>	<div style="text-align: right;">  </div> <div style="text-align: center;"> TESTSLA Elektrik Laboratuvarları Tic. Ltd. Şti. Kuzuluk Mah. Ankara Cad. No: 34 Akayazı / SAKARYA / TÜRKİYE Tel: +90 264 437 97 70 Faks: +90 264 437 97 80 </div>		
	<div style="text-align: right;">  </div> <div style="text-align: center;"> DENEY RAPORU TEST REPORT </div>		
Müşteri Adı/Adresi <i>Client Name/Address</i>	KRK ELEKTRİK İNŞ. TURZ. SAN. VE TİC. LTD. ŞTİ. Esenler Mahallesi Gözde Sokak No: 1 Pendik / İSTANBUL		
Numunenin Adı ve Tanfı <i>Name and Identity of Test Item</i>	BLACKSTN Marka BPL-2T Tipi Kontrol Panosu		
Talep Numarası <i>Order No.</i>	1806.10 Bu talebe bağlı rapor sayısı: 3	Numune Kabul Tarihi <i>Sample Acceptance Date</i> 28.06.2018	
Rapor Sayfa Sayısı <i>Num. Of Pages of The Report</i>	21 + 5 sayfa ek Toplam 26 sayfa	DeneY Tarihleri <i>Test Date(s)</i> 29.06.2018-23.07.2018	
DeneY Standartları <i>Test Standard(s)</i>	TS EN 61010-1: 05.06.2012 Ölçme, Kontrol Ve Laboratuvarında Kullanılan Elektriksel Donanımlar İçin Güvenlik Kuralları- Bölüm 1: Genel Kurallar		
DeneY Sonuçları <i>Test Result(s)</i>	OLUMLU / Ayrıntılar aşağıdaki sayfalarda verilmiştir. <i>POSITIVE Details, are given on the following pages which are part of this report.</i>		
<div style="text-align: center;"> Açıklamalar <i>Remarks</i> </div>			
Bu rapor, yalnızca deneyleri yapılan numune-ler için geçerlidir. <i>The test results relate only to the items tested.</i>			
Bu deneY raporunda (İ) İşaretiler deneYler, TÜRKAK tan alınmış akreditasyon kapsamında değildir. <i>Tests marked (R) in this report are not included in the TÜRKAK accreditation schedule for this laboratory.</i>			
DeneY laboratuvarın olarak faaliyette gösteren TESTSLA Elektrik Laboratuvarları AKREDİTASYON (TÜRKAK) tan AB-0386-T için TS EN ISO/TS EN 17025:2012 standartlarına göre akredite edilmiştir. TESTSLA Elektrik Laboratuvarları akredite edilmiştir TÜRKAK under registration number AB-0386-T for TS EN ISO/TS EN 17025:2012 as test laboratory			
Türk Akreditasyon Kurumu(TÜRKAK) deneY raporlarının tanınması konusunda Avrupa Akreditasyon Birliği(EA) ile Çok Taraflı Anlaşma ve Uluslararası Akreditasyon Birliği(ILAC) ile karşılıklı tanıma antlaşması imzalamıştır. Turkish Accreditation Agency (TÜRKAK) is a signatory to the European co-operation for Accreditation (EA) Multilateral Agreement (MLA) and to the International Laboratory Accreditation Cooperation (ILAC) Mutual Recognition Arrangement (MRA) for the recognition of test reports.			
DeneY ve veya ölçüm sonuçları, genişletilmiş ölçüm belirsizlikleri (ölçme belirsizliği) ve deneY metodları bu sertifikasyon tanımlarını aynen takip eden sayfalarda verilmektedir. The test and/or measurement results, the uncertainties (if applicable) with confidence probability and test methods are given on the following pages which are part of this report.			
<div style="text-align: center;"> Mühür  </div>	<div style="text-align: center;"> Rapor Tarihi <i>Report Date</i> 27.07.2018 </div>	<div style="text-align: center;"> DeneY Sorumlusu <i>Person in Charge of Test</i>  Mehmet ŞUMNU </div>	<div style="text-align: center;"> Laboratuvar Müdürü <i>Laboratory Manager</i>  Caner EREN </div>

Quality Certificates